



# HOT AIR LANCE

PART MANUAL - 26410

Rev. 0



# TABLE OF CONTENTS

Parts Check List.....	4
Safety Precautions.....	5
Limited Warranty.....	6
Warranty Claim Instructions.....	7
Operating Instructions	
Start Up.....	8-9
Shut-Down.....	10
Instructions For Ordering Parts.....	10
Parts List	
Parts Diagram.....	11
Parts List.....	12

# PARTS CHECK LIST

**NOTE: Your box should contain the following items. If any discrepancies are found, please contact Crafcro Customer Service: (800-528-8242)**

\* A: HOT AIR LANCE



\* B: PROPANE REGULATOR W/ GAUGE



\* C: HOSE KIT ASSEMBLY



\* D: AIR WATER SEPERATOR



\* E: WHEEL KIT COMPLETE



\* F: OPERATOR MANUAL

# SAFETY PRECAUTIONS

- High operating temperatures of Hot Air Lance require protective clothing, gloves, and boots be worn by operator during operation of unit



- Always wear eye protection.

- Due to the noise of Hot Air Lance operation, hearing protection is required.

- Read Operator Manual thoroughly before operating Hot Air Lance.

- Make sure all persons operating this equipment have read the OperationI Instructions and are familiar with the Hot Air Lance operation and potential hazards



CAUTION

This unit can cause severe burns if used improperly. Keep hands, feet, and clothing away from hot parts.

- Always keep a fire extinguisher near the operating area. Maintain extinguisher properly and be familiar with its use.

- Replace any hoses which show signs of wear, fraying, or splitting. Be sure all fittings and joints are tight and leak-proof.

- Precaution is the best insurance against accidents.



- Do Not Point** Hot Air Lance at anyone.



CAUTION

The Hot Air Lance produces very high temperatures and extreme caution should be excercised. The Lance must not be used near edges of buildings or very dry grassy areas. Use Extreme Caution. The Lance must not be left operating unattended. Do not set down or place on flammable materials until cooled.

•Crafco, Inc. assumes no Liability for an accident or injury incurred through improper use of the equipment.

# HOT AIR LANCE LIMITED WARRANTY

Crafco, Inc., through its authorized distributor, will replace for the original purchaser free of charge any parts found upon examination by the factory at Mesa, Arizona, to be defective in material or workmanship. This warranty is for a period within 60 days of purchase date.

Crafco, Inc., shall not be liable for parts that have been damaged by accident, alteration, abuse, improper lubrication/maintenance, normal wear, or other cause beyond our control.

The warranty provided herein extends only to the repair and/or replacement of those components on the equipment covered above and does not cover **labor** costs. The warranty does not extend to incidental or consequential damages incurred as a result of any defect covered by this warranty.

All transportation and labor costs incurred by the purchaser in submitting or repairing covered components must be born by the purchaser.

Crafco, Inc. specifically disavows any other representation, warranty, or liability related to the condition or use of the product.



**WARNING:** Use of replacement parts other than genuine Crafco parts may impair the safety or reliability of your equipment and nullifies any warranty.

# WARRANTY CLAIM INSTRUCTIONS

Please follow the instructions stated below when calling in a Warranty Claim. Failure to follow these procedures may be cause to void the warranty.

1. Call your local CrafcO Distributor. If you do not know who your local distributor is, call a CrafcO Customer Service Representative, (Toll Free 1-800-528-8242) for name, location, and telephone number.
2. On contacting the Distributor, be prepared to identify the machine type, model number, and serial number, also, the date of purchase if available.
3. Should the cause of the malfunction be a defective part, the Distributor will advise you of the procedure to follow for a replacement.
4. The warranty is valid only for parts, which have been supplied or recommended by CrafcO, Inc.

If you have any additional questions regarding warranty repairs and parts, please do not hesitate to call toll free 1-800-528-8242.

CRAFCO, INCORPORATED  
235 SOUTH HIBBERT DRIVE  
MESA, AZ. 85210  
480-655-8333  
480-655-1712 (FAX)  
Toll Free 1-800-528-8242

# HOT AIR LANCE OPERATING INSTRUCTIONS START UP

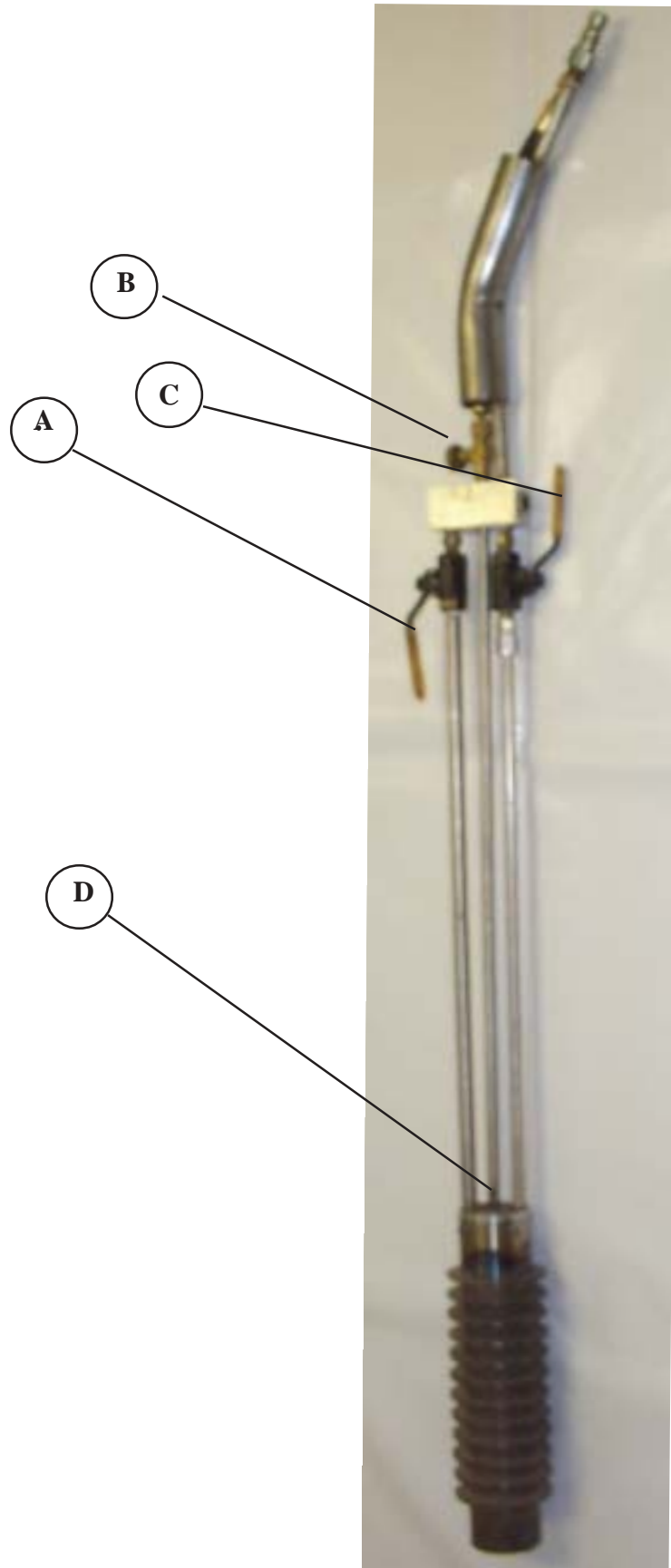
**DO NOT OPERATE** Hot Air Lance without following these instructions:

1. Fill propane tank(s).
2. Make air and LP connections at lance handle. Insure all fittings and connections are tight. If a leak is detected DO NOT OPERATE UNIT. Tighten as needed and start again.
3. To light unit, first make sure no flammable materials are present in the working area. When working with LP Gas always light the lance facing downwind. Be sure all operators have fully read this manual and are knowledgeable on its operation and safety precautions needed.
4. Open LPG tank valve(s). Set regulator at 15-20 psi. Close LPG tank valve(s)
5. Close both ball valves on Hot Air Lance. Both valve handles should be facing 90 degrees from valve body.
6. Start air compressor.
7. Open air line on compressor (if equipped)
8. Open top ball valve (combustion valve) slightly to allow small amount of air flow through unit. (See Item A)
9. Close LP Needle valve on lance. (See Item B)
10. Open LPG tank valve(s)
11. Open LP needle valve 1/4 turn. (See Item B)
12. Using a long neck lighter, light lance through ignition holes at top of burner tube. Never attempt to light lance at burner tube base as severe burns could result if LP Gas valve is opened too far. (See item D)
13. Slowly open needle valve and top ball valve together. (Be sure to open LP needle valve at a faster rate than air valve or unit will extinguish. If this occurs, close all valves and start over.) Once top ball valve is halfway open, open bottom ball valve fully. (See Item C)
14. Continue to open top ball valve and LP needle valve until top ball valve is fully open.
15. Slowly cut back the LP needle valve until Heat Lance produces a jet engine roaring sound and the flame is pulled back into the burner chamber. There should be no visible flame during operation. If there is a visible flame adjust LP settings.
16. To adjust the BTU downward, first slowly close down some air to the combustion system using the top ball valve. Then turn down the propane needle valve until the combustion is at its optimum mixture. No flame should be present at that time. Alternate between the air and propane settings in small steps until the desired setting is reached.

The Hot Air Lance requires a minimum of at least 1/2" air supply hose and no more than 60 ft in length. Any additional distance requirements can be met by using a 3/4" air hose. The air filter supplied with the unit must remain in the upright position to function properly.



# HOT AIR LANCE



## SHUTDOWN

1. Turn off propane supply by needle valve (See Item B) and LPG tank valve(s)
2. Allow air to flow through burner chamber and the air lance tube until they have cooled down.
3. After unit has had sufficient time to cool, shut down air compressor.

## INSTRUCTION FOR ORDERING PARTS

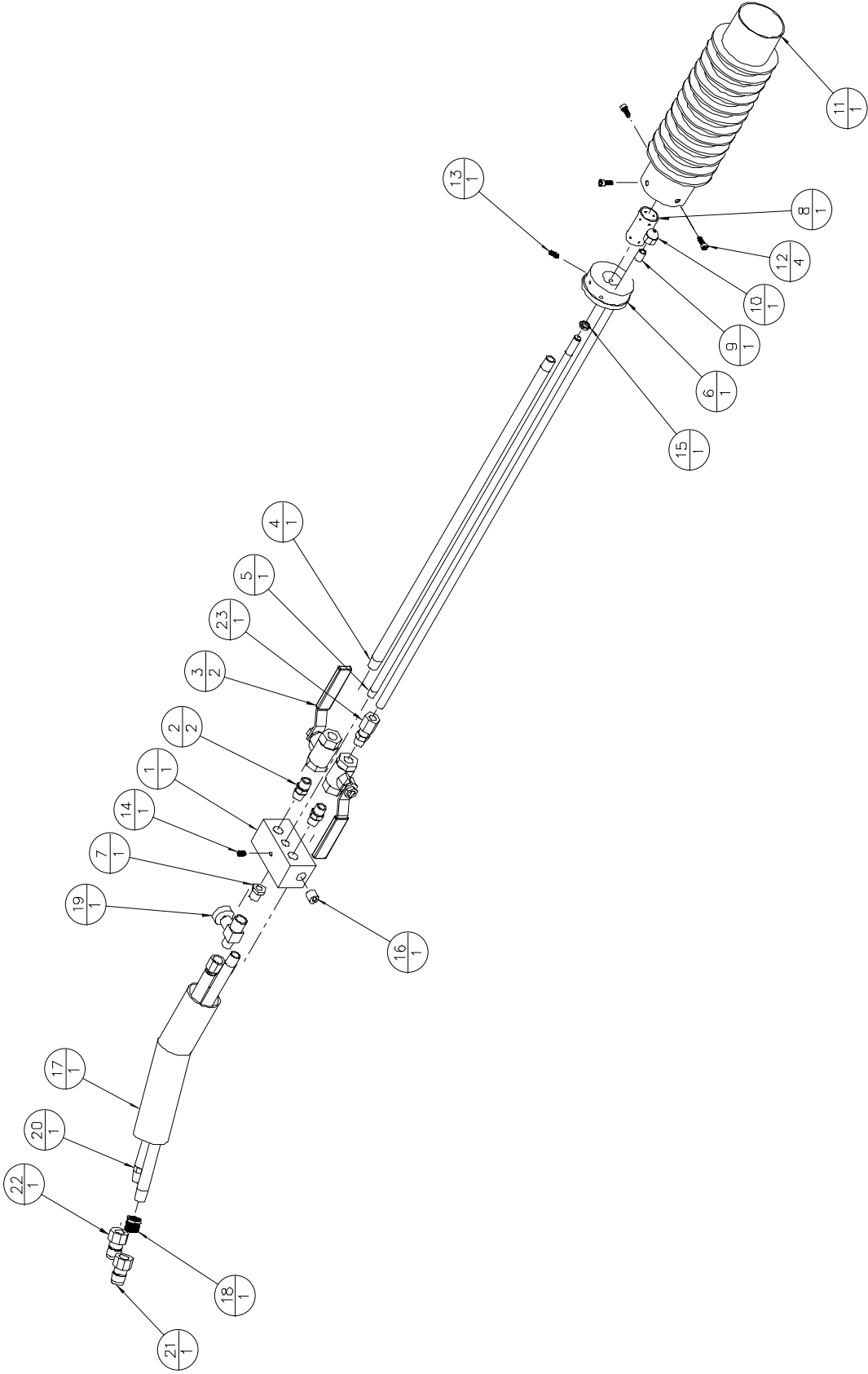
Parts may be ordered from your local Crafcro distributor or directly from Crafcro, Inc. if a distributor is not available in your area. When ordering parts, give the following information:

1. Part Number
2. Serial Number and Date Purchased

**Write, telephone, or fax:**

CRAFECO, INC.  
235 SOUTH HIBBERT  
MESA, AZ 85210  
(480) 655-8333  
(480) 655-1712 (FAX)  
Toll Free: 1-800-528-8242

HOT AIR LANCE- 45650



## HOT AIR LANCE- 45650 PARTS LIST

NUMBER	PART NUMBER	QTY	DESCRIPTION
1	45651	1	MIXING BLOCK
2	51401	2	1/4 NPT HX NIPPLE
3	29195	2	1/4 BALL VALVE
4	45656	1	AIR MIXER TUBE
5	45658	1	PROPANE TUBE W/ ORFICE
6	45652	1	BURNER BASE
7	28340	1	1/4 X 1/8 BUSHING
8	45654	1	PRIMARY AIR TUBE
9	45657	1	AIR LANCE TUBE
10	45668	1	AIR ORFICE "A"- .125"
11	45653	1	MAIN BURNER TUBE
12	45670	4	SCREW, #10-32 X 1/2 ALLEN HD
13	45672	1	SCREW, #10-32 X 1/2 ALLEN SET
14	45671	1	SCREW, 1/4-20 X 3/8 ALLEN SET
15	45669	1	JAM NUT 1/8-27 NPT
16	27990	1	1/4" COUNTERSET PLUG
17	45665	1	HANDLE ASSY
18	45663	1	REDYCERM 3/8 NPT TO 1/4 NPT
19	45659	1	NEEDLE VALVE
20	45675	1	HOSE, PROPANE
21	45679	1	COUPLING, 1/4 FMNPT X M
22	45681	1	COUPLING, 1/4 FMNPT X FM
23	45664	1	1/4 NPT X 3/8 TUBE FERULE LOCK FITTING
NS	45693	1	20 FT HOSE KIT AIR/PROPANE/COVER
NS	45694	1	40 FT HOSE KIT AIR/PROPANE/COVER
NS	45695	1	60 FT HOSE KIT AIR/PROPANE/COVER
NS	45688	1	PROPANE REGULATOR W/ GAUGE
NS	45690	1	WHEEL GUARD KIT COMPLETE
NS	45689	1	AIR FILTER ASSY COMPLETE



---

---

**Pioneering Leadership and  
Innovation in Quality  
Pavement Maintenance  
Materials.**



**235 South Hibbert • Mesa, Arizona 85210  
480-655-8333 • Watts 1-800-528-8242  
Fax 480-655-1712**

©Copyright 1999 by Crafco, Inc.